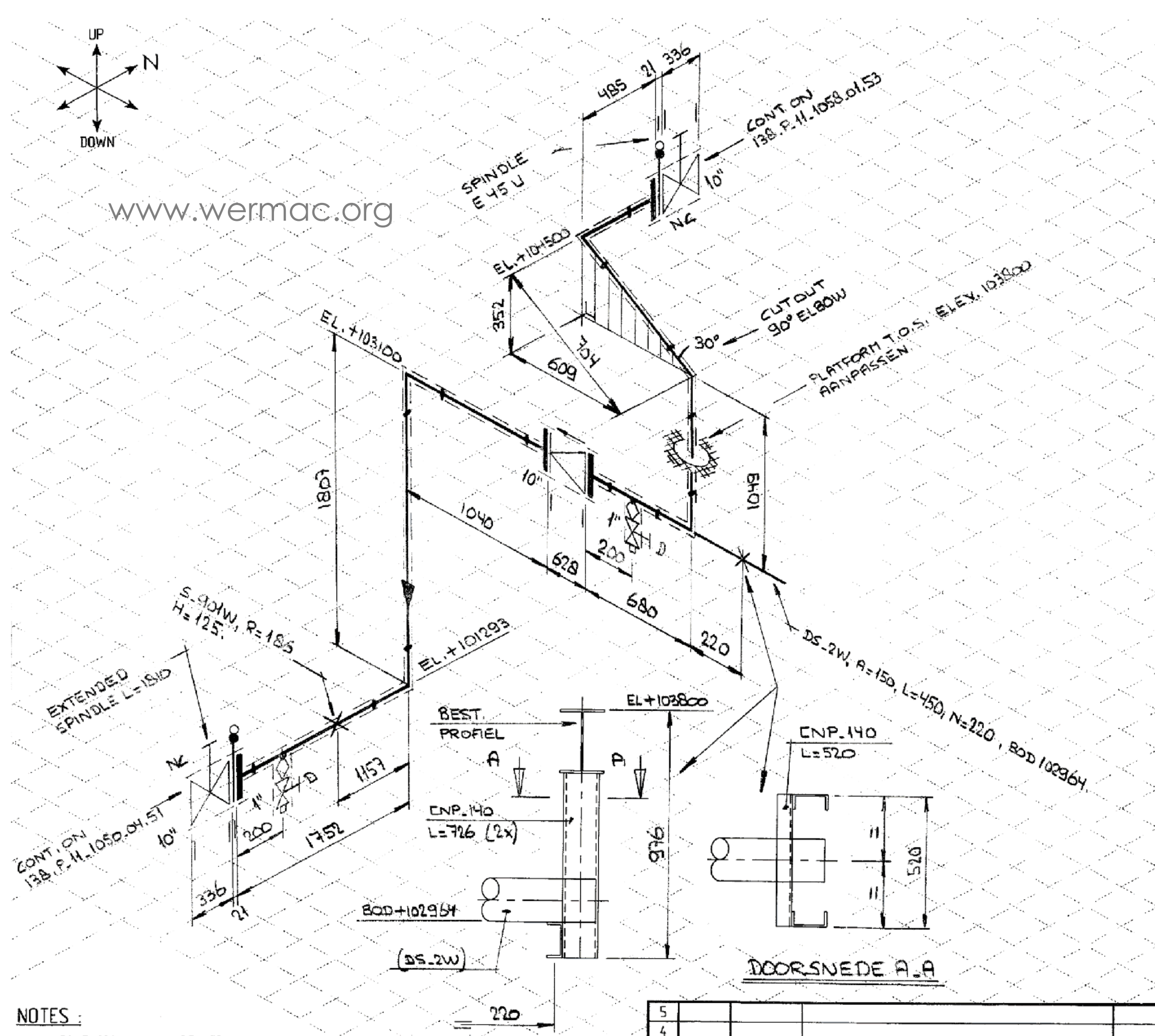


www.wermac.org



QTY	SIZE	MATERIAL	DESCRIPTION
0.6m	6"	A106B/A520	PIPE SCH. 40 (SUPPORT)
3.7m	10"	A106B/A520	PIPE SCH. 40
5	10"	A234.WPB	ELBOW 90° LR BW SCH.40
4	10"	A105.N	WN. FLANGE 150# RF SCH.40
2	10"	A515.GR.65	SPECTABLE BL. 150# RF
2	10"x1"	A105.N	NIPPLET PE 3000 #
2	1"	A105.N	PLUG 3000# THR'D
2	10"	A216.WCB	GATE VALVE 150# RF
1	10"	A216.WCB	CHECK VALVE 150# RF SWING
2	1"	A105.N	GATE VALVE 800# SWX THR'D
8	10"	SP.W.	GASKET 150# RF.
48	7/8"x20	A193B/A1942H	STUDS & NUTS
24	7/8"x40	A193B/A1942H	STUDS & NUTS
1	10"		EXTENDED SPINDLE L=1810

INSULATED	< 50 mm	NO	YES
x " STEAM TRACING	barg	NO	YES
P.E.D. APPROVAL/MODULE	II/A1	NO	YES
DANGER CAT.	I	X-RAY	
DESIGN PRESS./TEMP.		17.6 barg	65 °C
OPERATING PRESS./TEMP.		13.6 barg	15 °C
TEST PRESS./TEMP.		27.4 barg	°C

REFERENCE DRAWINGS

DRAWING NUMBER	DESCRIPTION
POSM.H.M.1026	P&I DIAGRAM

MAIN LINE SIZE 10"
SPECIFICATION: ICSIP.1

LINE NUMBER:
P.11.0150.1602

- NOTES:
- ALL DIMENSIONS SHALL BE VERIFIED BY PIPING CONTRACTOR BEFORE FABRICATION
 - FIELD WELDS AND OVERLENGTHS TO BE DETERMINED BY PIPING CONTRACTOR

REV	BY	DATE	DESCRIPTION	CHK'D
5				
4				
3				
2				
1	FC/MH	AUG-08	AS BUILT FOR PROJ. RMO/07045	
0	CCN	AUG.07	FIRST ISSUE	

EXPLORE the WORLD of PIPING		JOB NO. : 07045
AREA	ISO	REV
138	P.11.0150.1602	1